



# box manufatti csl

## contenitori utenze

energia elettrica-gas-acqua

S.P. strutture prefabbricate s.r.l  
via Fornaci 10-12  
Colombaro di  
Corte Franca Brescia

tel. 0039 030 98 41 39  
fax. 0039 030 98 28 097  
e-mail [info@spsrl.it](mailto:info@spsrl.it)  
interne [www.spsrl.it](http://www.spsrl.it)

















BOX 98 C  
(GEA 242)





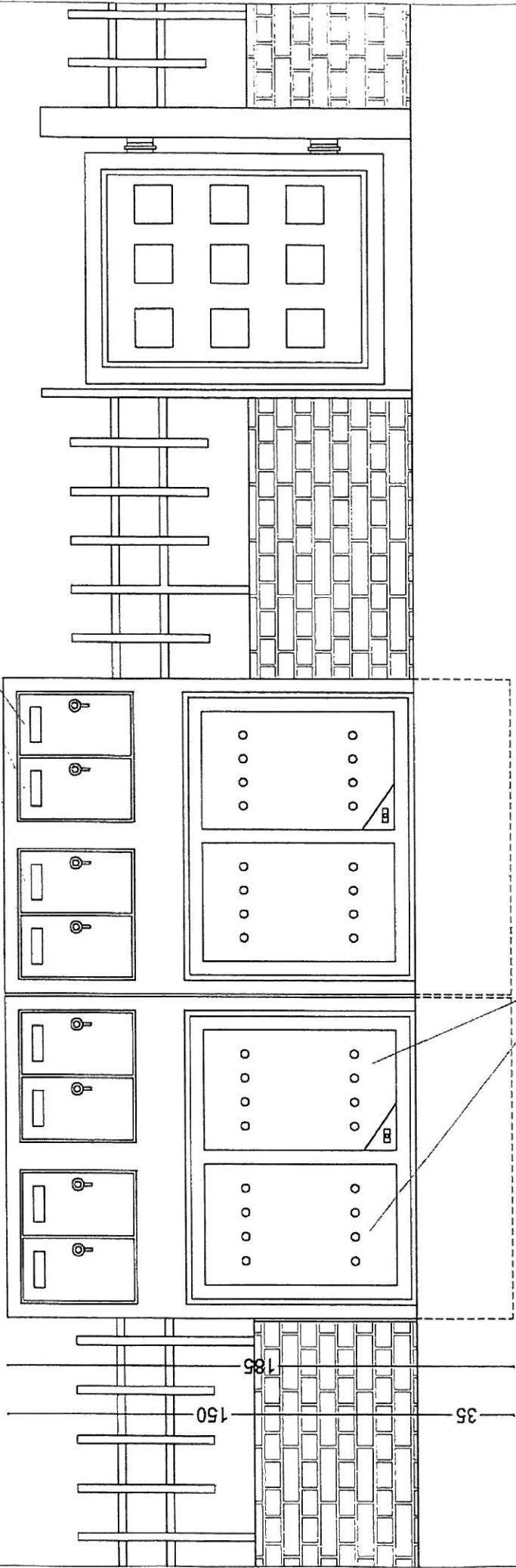


232

116

116

CASSETTE ENEL



S.P. STRUTTURE PREFABBRICATE s.r.l.  
via Fornaci 10 Colombaro di Corte Franca (Bs)

TEL. 030/984139  
FAX 030/9828097

# BOX 98 C (GEA 242)

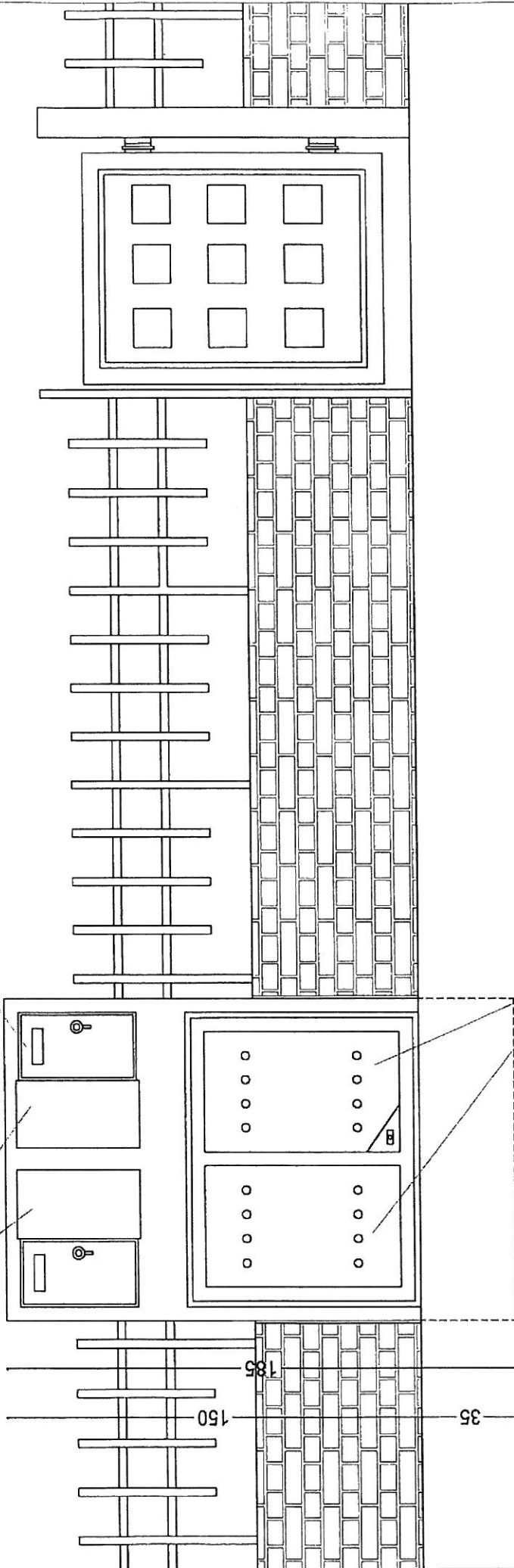
PROSPETTO (2 BOX AFFIANCATI)



LAMIERE VERNICIATE  
COPERTURA VANI INUTILIZZATI

116

CASSETTE ENEL



TEL. 030/984139  
FAX 030/9828097

S.P. STRUTTURE PREFABBRICATE s.r.l.  
via Formaci 10 Colombaro di Corte Franca (Bs)

BOX 98 C (GEA 242)

PROSPETTO



BOX 98 CI  
( GEA 242 )

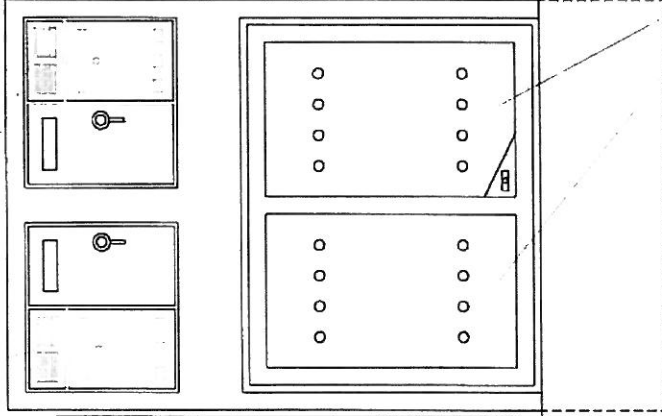




CASSETTE POSTA-CITOFONO

115

CASSETTE ENEL



ANTE IN FERRO

Tel. 030/984139  
Fax 030/9828097  
internet: www.spsrl.it  
e-mail: info@spsrl.it

S.P. STRUTTURE PREFABBRICARE s.r.l.  
via Fornaci 10 Colombaro di Corte Franca (Bs)

**BOX 98 CI (GEA 242)**

PROSPETTO

150

153

35



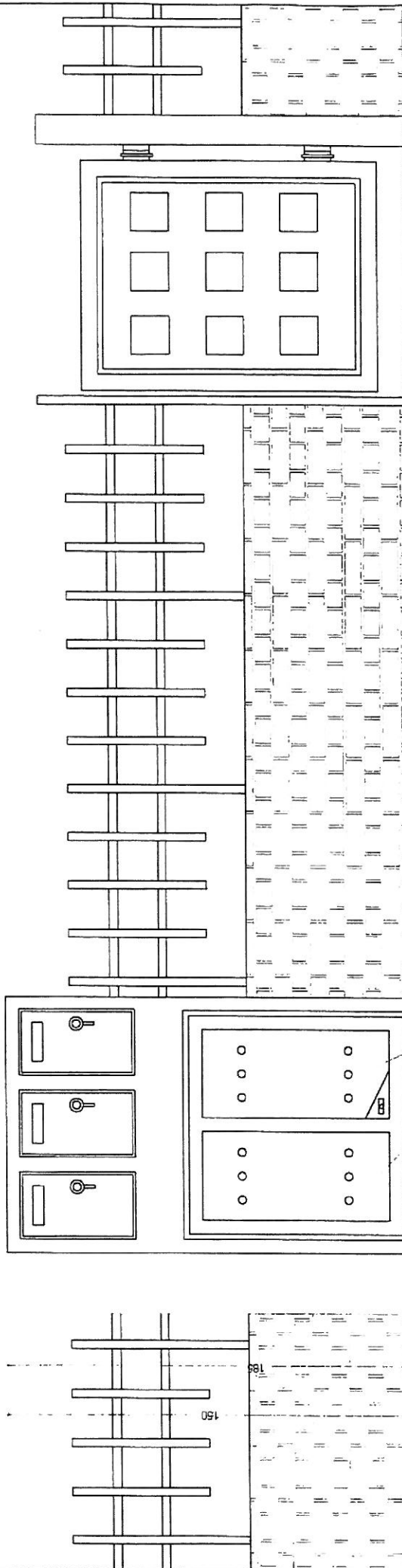
BOX 98 CX  
(GEA 232)





CASSETTE ENEL

90



ANTE IN FERRO

Tel. 030/984139  
Fax 030/9828097  
internet: www.spsrl.it  
e-mail: info@spsrl.it

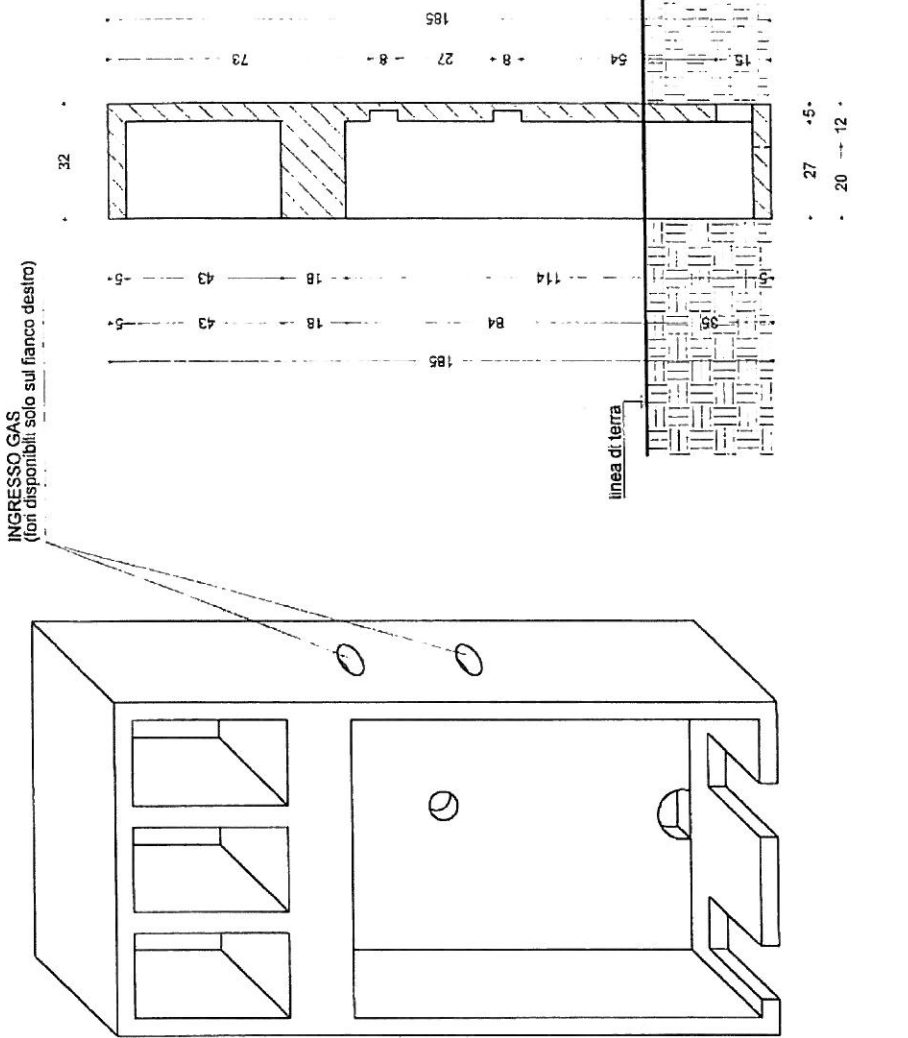
S.P. STRUTTURE PREFABBRICARE s.r.l.  
via Fornaci 10 Colombaro di Corte Franca (Bs)

**BOX 98 CX (GEA 232)**

PROSPETTO

BOX 98 CXI  
( GEA 232 )





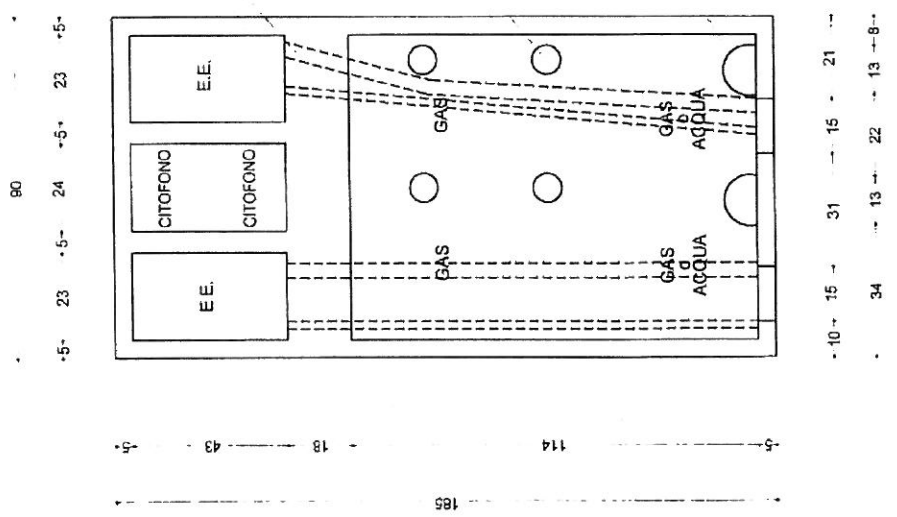
INGRESSO GAS  
(fori disponibili solo sul fianco destro)

TUBI CORRUGGATI  
INGRESSO USCITA  
ENERGIA ELETTRICA

PREDISPOSIZIONI  
USCITA GAS

USCITA  
GAS-ACQUA

INGRESSO  
GAS-ACQUA



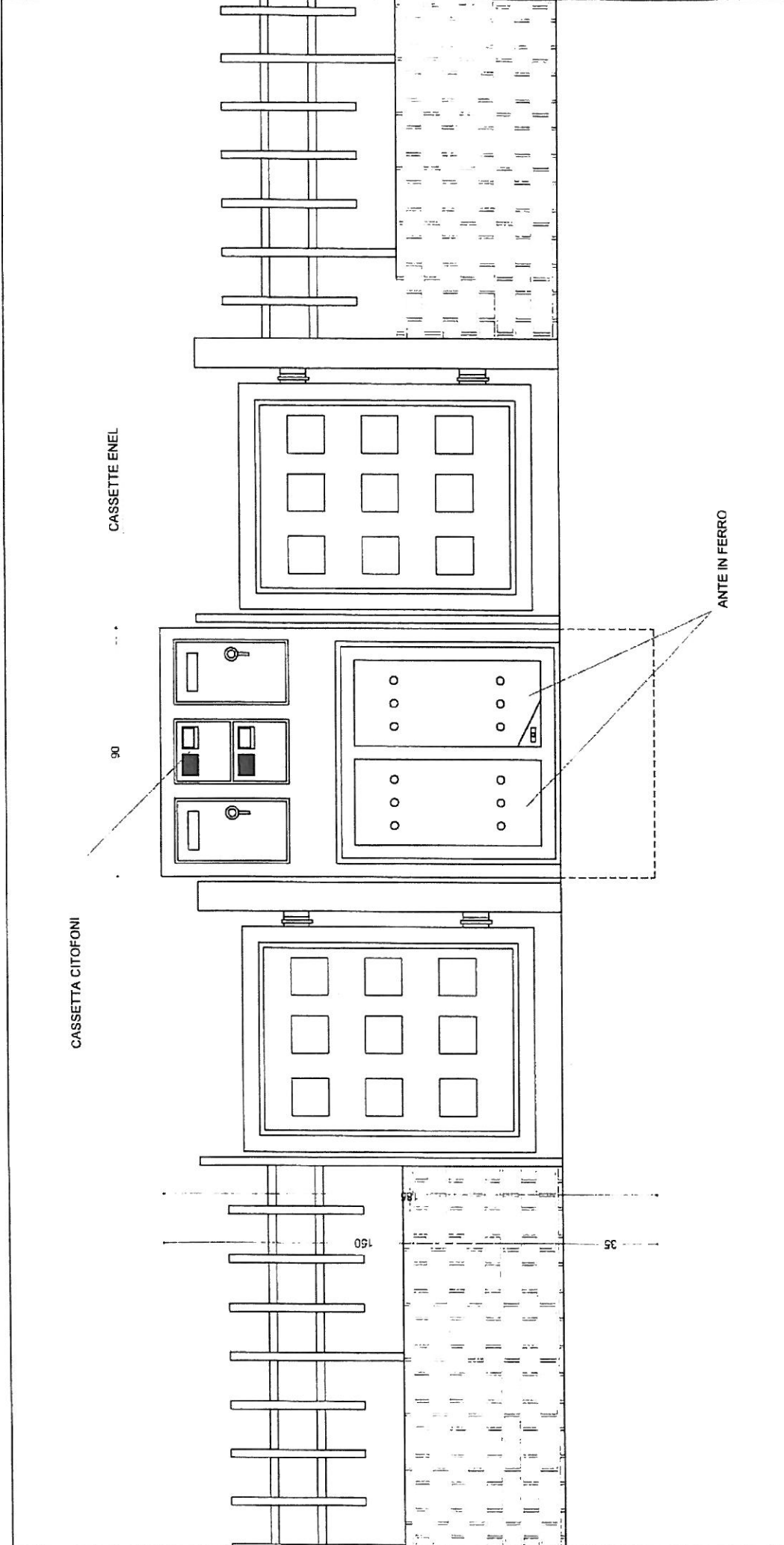
S.P. STRUTTURE PREFABBRICARE s.r.l.  
via Fornaci 10 Colombaro di Corte Franca (Bs)

Tel. 030/984139  
Fax 030/9828097  
internet: www.spsrl.it  
e-mail: info@spsrl.it

## BOX 98 CXI (GEA 232)

MANUFATTO IN CEMENTO ARMATO VIBRATO

PREDISPOSIZIONI:  
ALLACCIAMENTO GAS - ENERGIA ELETTRICA - ACQUA



S.P. STRUTTURE PREFABBRICARE s.r.l.  
 via Fornaci 10 Colombaro di Corte Franca (Bs)

Tel. 030/9841139  
 Fax 030/9828097  
 internet: www.spsrl.it  
 e-mail: info@spsrl.it

# BOX 98 CXI (GEA 232)

PROSPETTO

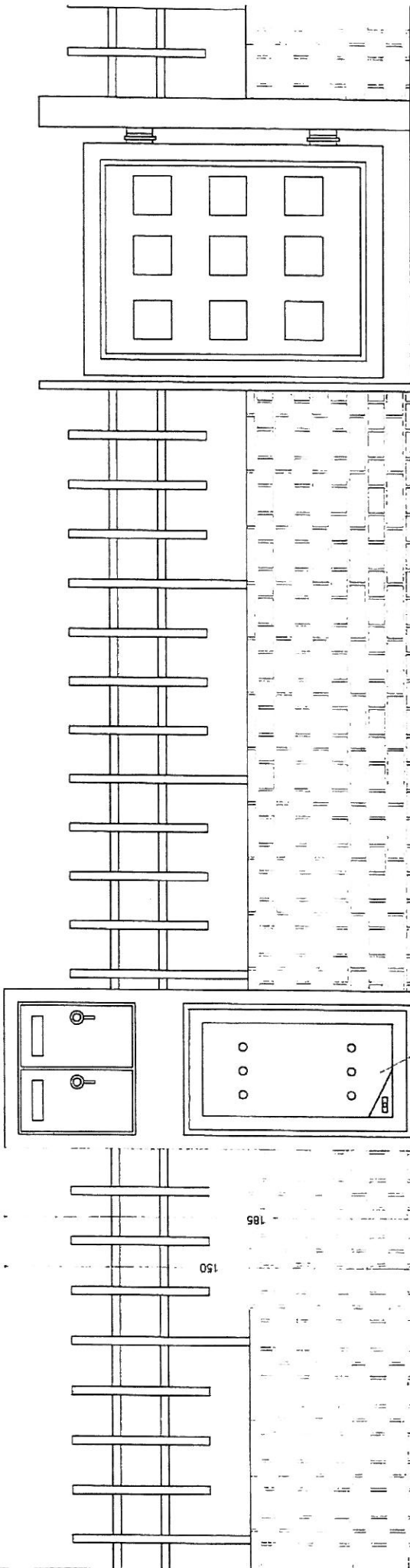


BOX 98 SX  
(GEA 121)



58

CASSETTE ENEL



ANTA IN FERRO

S.P. STRUTTURE PREFABBRICARE s.r.l.  
via Fornaci 10 Colombaro di Corte Franca (Bs)

Tel. 030/984139  
Fax 030/9828097  
Internet: www.spsrl.it  
e-mail: info@spsrl.it

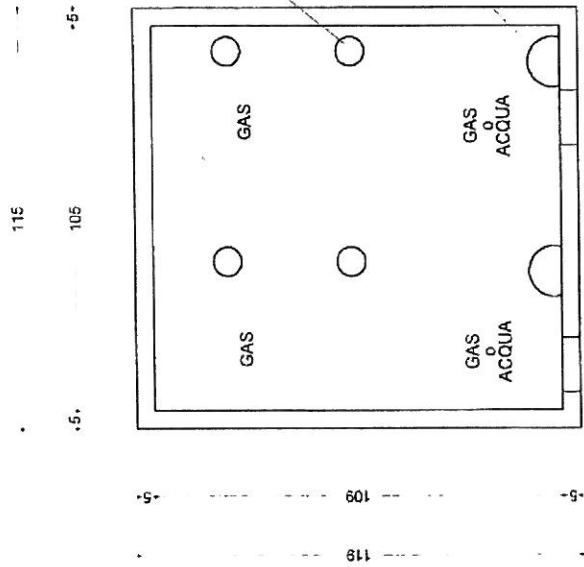
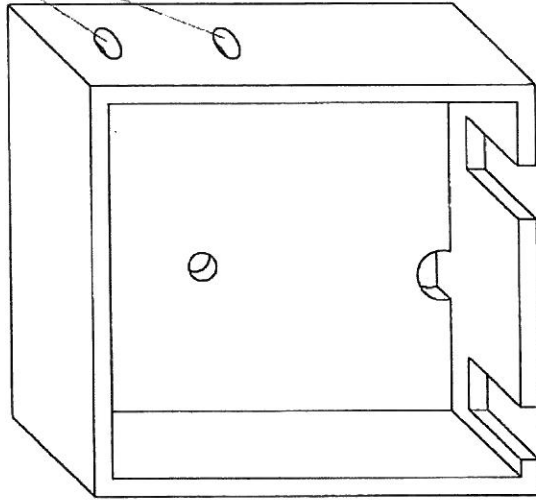
**BOX 98 SX (GEA 121)**

PROSPETTO



**BOX 98 AG**  
**(AG 22)**

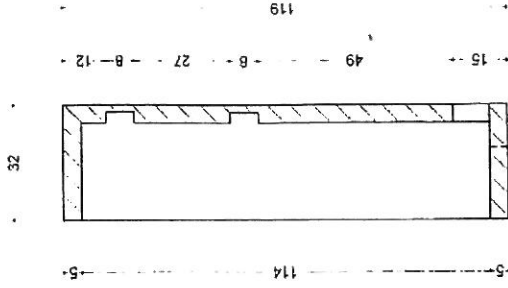
INGRESSO GAS  
(fori disponibili solo sul fianco destro  
o solo sul fianco sinistro)



PREDISPOSIZIONI  
USCITA GAS

USCITA  
GAS-ACQUA

INGRESSO  
GAS-ACQUA



• 27 -5-  
• 20 • 12 •

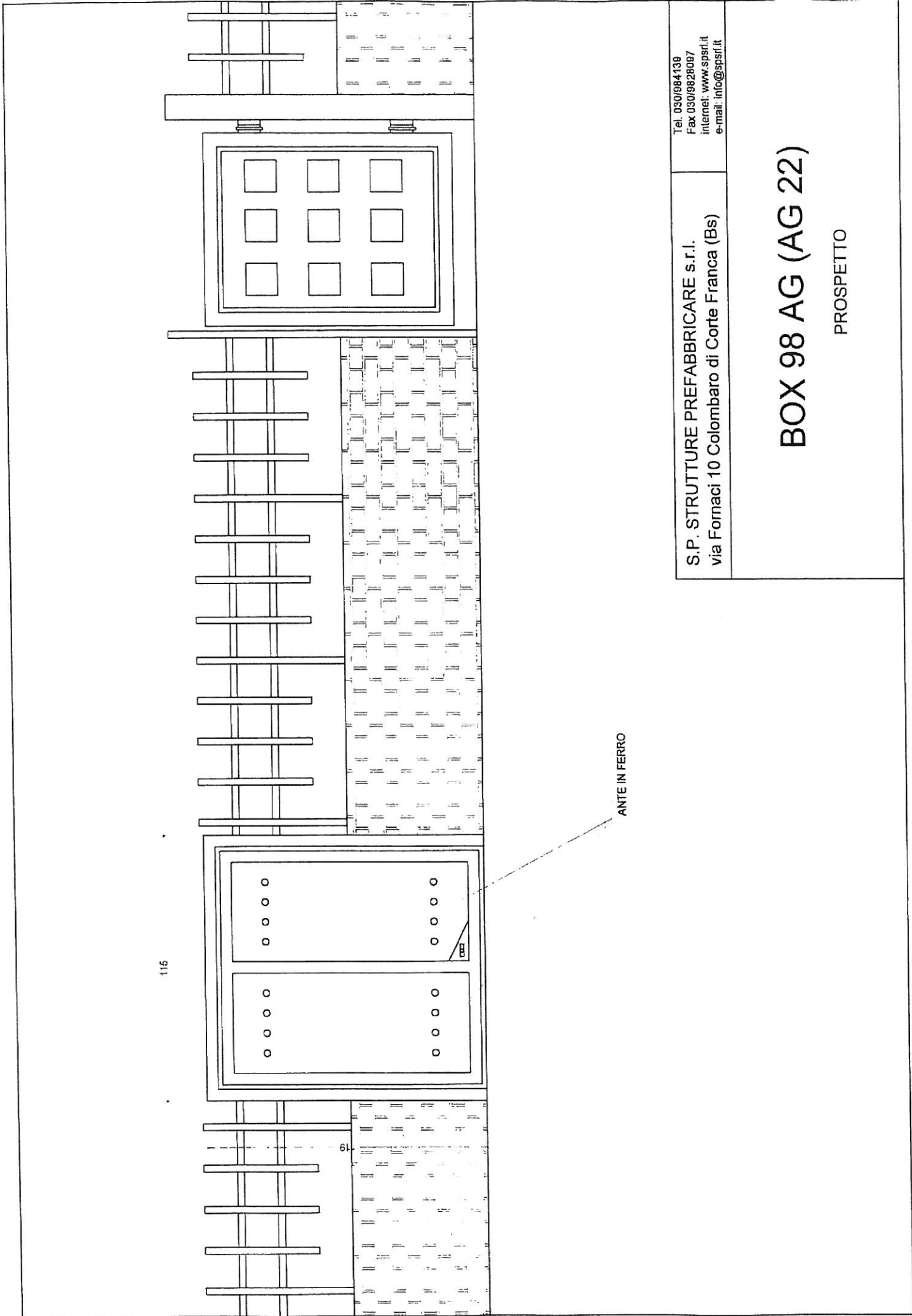
S.P. STRUTTURE PREFABBRICARE s.r.l.  
via Fornaci 10 Colombaro di Corte Franca (Bs)

Tel. 030/984138  
Fax 030/9828097  
Internet: www.spsrl.it  
e-mail: info@spsrl.it

## BOX 98 AG (AG 22)

MANUFATTO IN CEMENTO ARMATO VIBRATO

PREDISPOSIZIONI:  
ALLACCIAMENTO ACQUA - GAS



115

61

ANTE IN FERRO

Tel. 030/984139  
Fax 030/9828097  
internet: www.spsri.it  
e-mail: info@spsrif.it

S.P. STRUTTURE PREFABBRICARE s.r.l.  
via Formaci 10 Colombaro di Corte Franca (Bs)

# BOX 98 AG (AG 22)

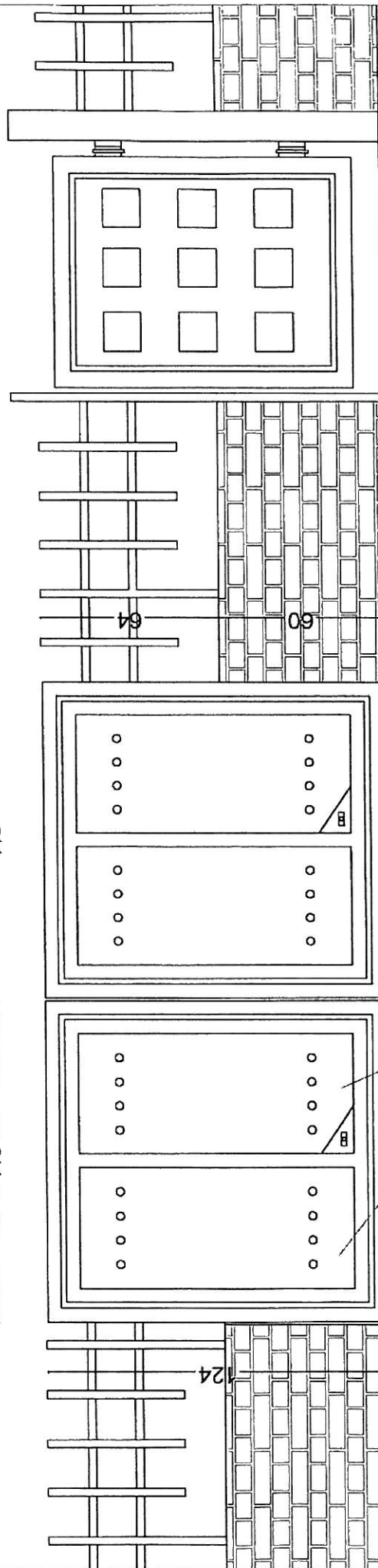
PROSPETTO



232

116

116



S.P. STRUTTURE PREFABBRICATE s.r.l.  
Via Fornaci 10 Colombaro di Corte Franca (Bs)

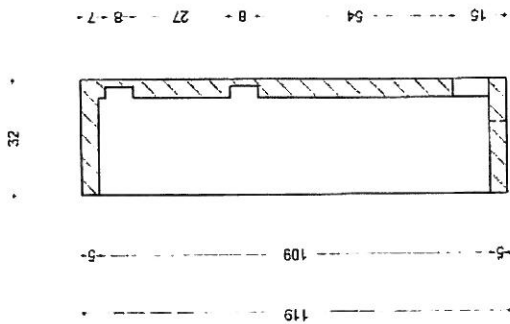
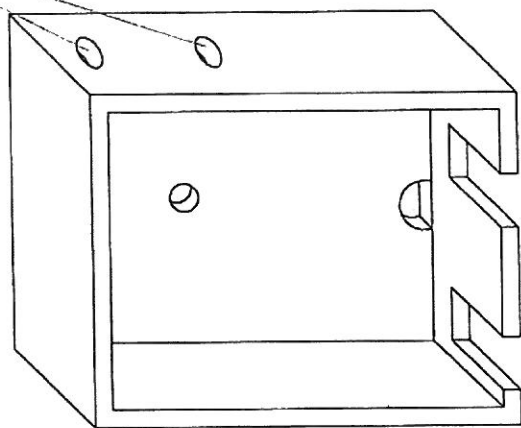
TEL. 030/984139  
FAX 030/9828097

## BOX 98 AG (AG 22)

PROSPETTO (2 BOX AFFIANCATI)

**BOX 98 AGX**  
**(AG 22)**

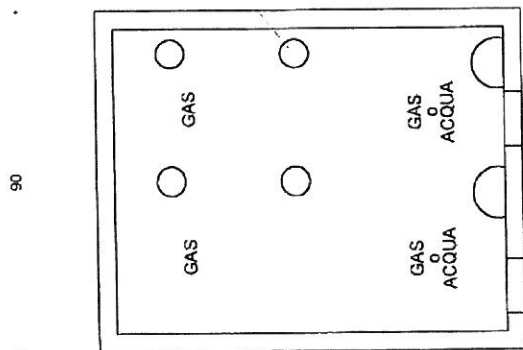
INGRESSO GAS  
(fori disponibili solo sul fianco destro)



PREDISPOSIZIONI  
USCITA GAS

USCITA  
GAS-ACQUA

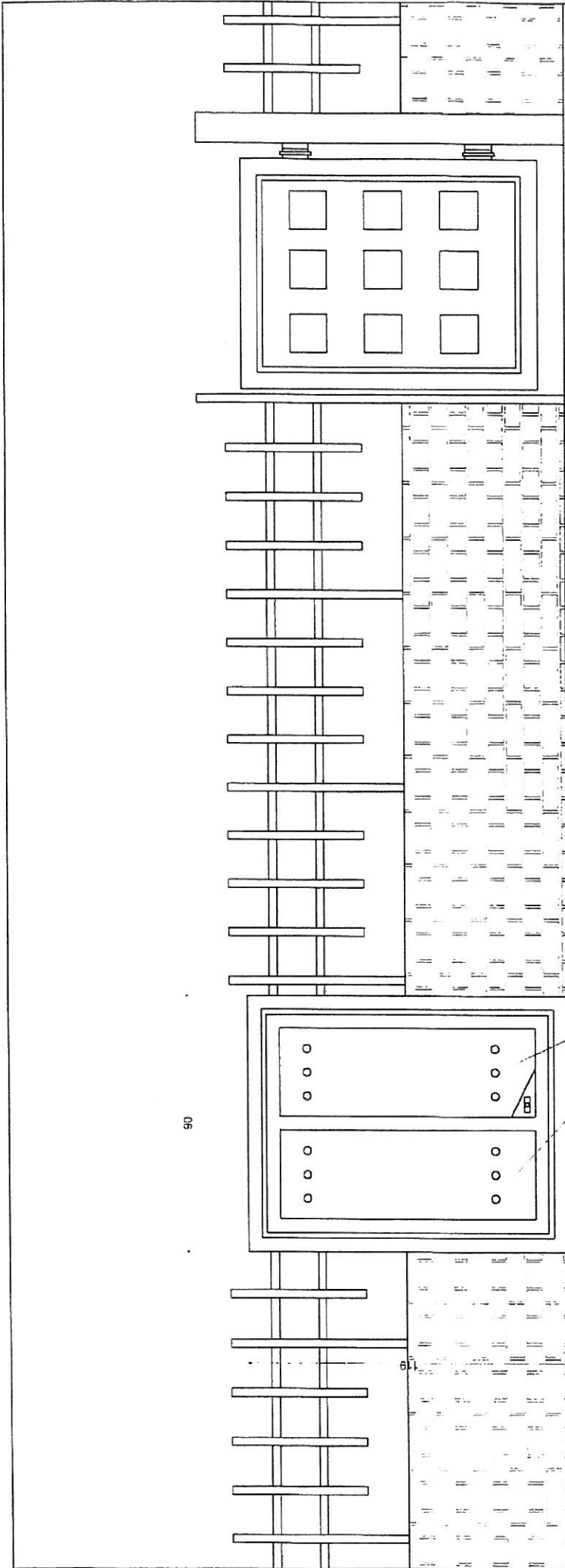
INGRESSO  
GAS-ACQUA



Tel. 030/984138  
Fax 030/9828087  
internet: www.spsrl.it  
e-mail: info@spsrl.it

S.P. STRUTTURE PREFABBRICARE s.r.l.  
via Formaci 10 Colombaro di Corte Franca (Bs)

**BOX 98 AGX (AG22)**  
MANUFATTO IN CEMENTO ARMATO VIBRATO  
PREDISPOSIZIONI:  
ALLACCIAMENTO ACQUA - GAS



90

61

ANTE IN FERRO

Tel. 030/984139  
Fax 030/9828097  
Internet: www.spsrl.it  
e-mail: info@spsrl.it

S.P. STRUTTURE PREFABBRICARE s.r.l.  
via Fornaci 10 Colombaro di Corte Franca (Bs)

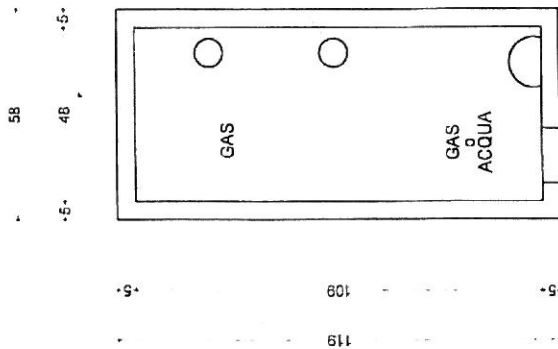
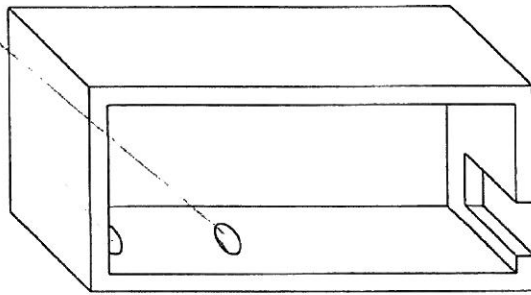
**BOX 98 AGX (AG22)**

PROSPETTO



BOX 98 AGSX  
( AG 11 )

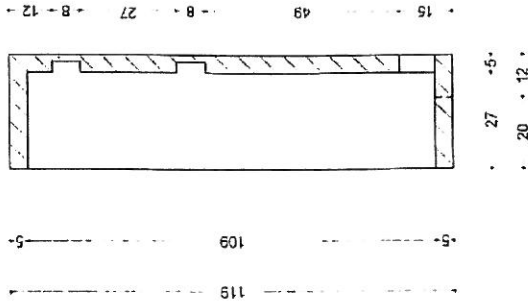
INGRESSO GAS  
(fori disponibili solo sul fianco sinistro)



PREDISPOSIZIONI  
USCITA GAS

USCITA  
GAS-ACQUA

INGRESSO  
GAS-ACQUA



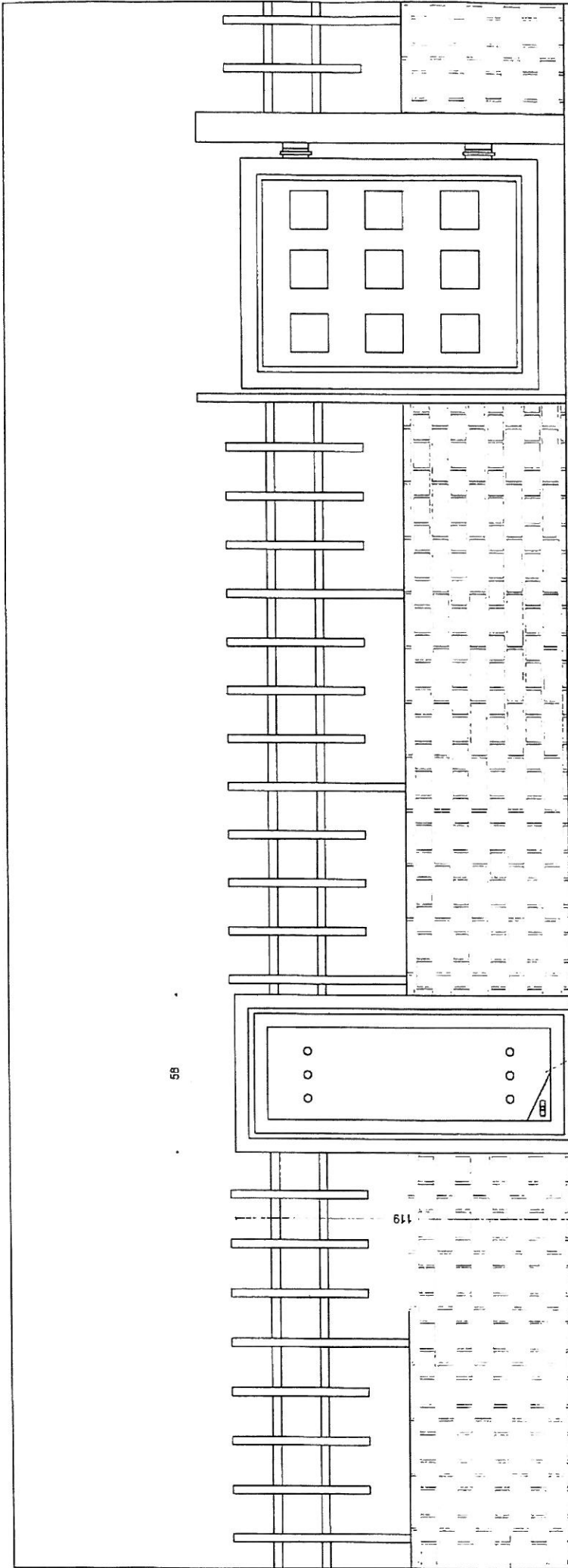
Tel 030/984139  
Fax 030/9828097  
internet: www.spsrl.it  
e-mail: info@spsrl.it

S.P. STRUTTURE PREFABBRICARE s.r.l.  
via Fornaci 10 Colombaro di Corte Franca (Bs)

# BOX 98 AGSX (AG 11)

MANUFATTO IN CEMENTO ARMATO VIBRATO

PREDISPOSIZIONI:  
ALLACCIAMENTO GAS - ACQUA



58

119

ANTA IN FERRO

Tel. 030/984139  
Fax 030/9826097  
internet: www.spsrl.it  
e-mail: info@spsrl.it

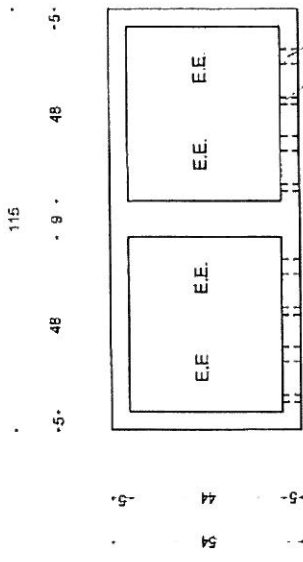
S.P. STRUTTURE PREFABBRICARE s.r.l.  
via Fornaci 10 Colombaro di Corte Franca (Bs)

# BOX 98 AGSX (AG 11)

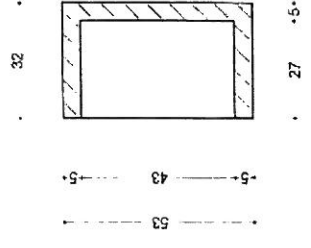
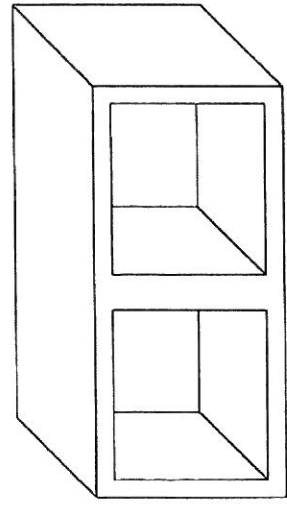
PROSPETTO

**BOX 98 E4**





TUBI CORRUGGATI  
INGRESSO USCITA  
ENERGIA ELETTRICA



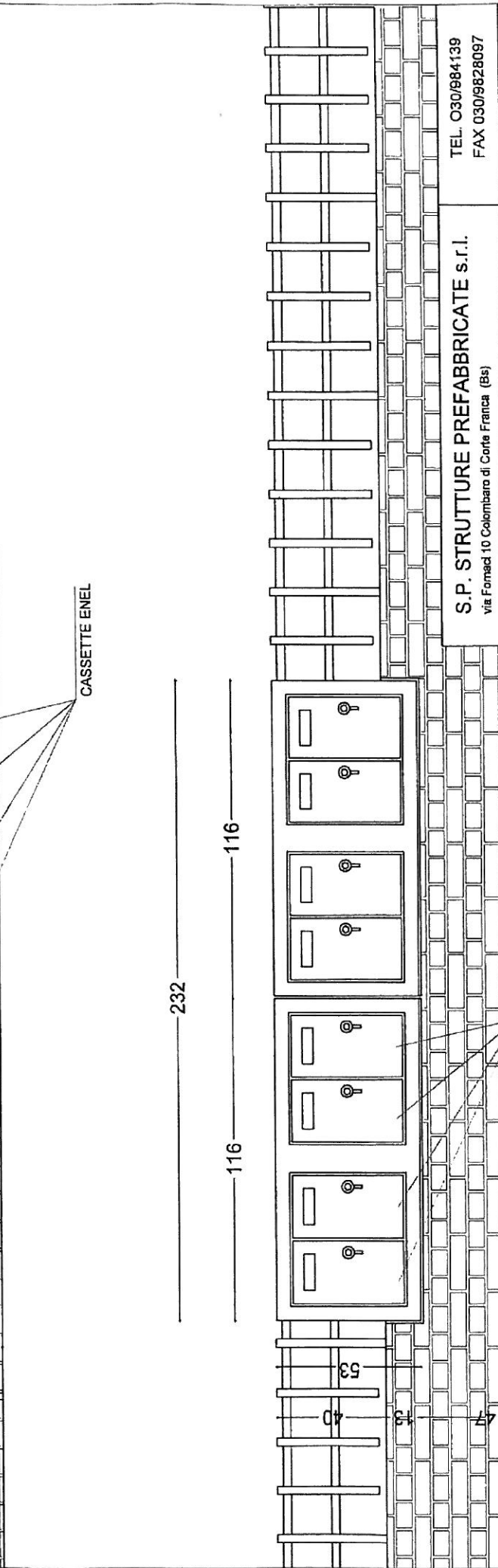
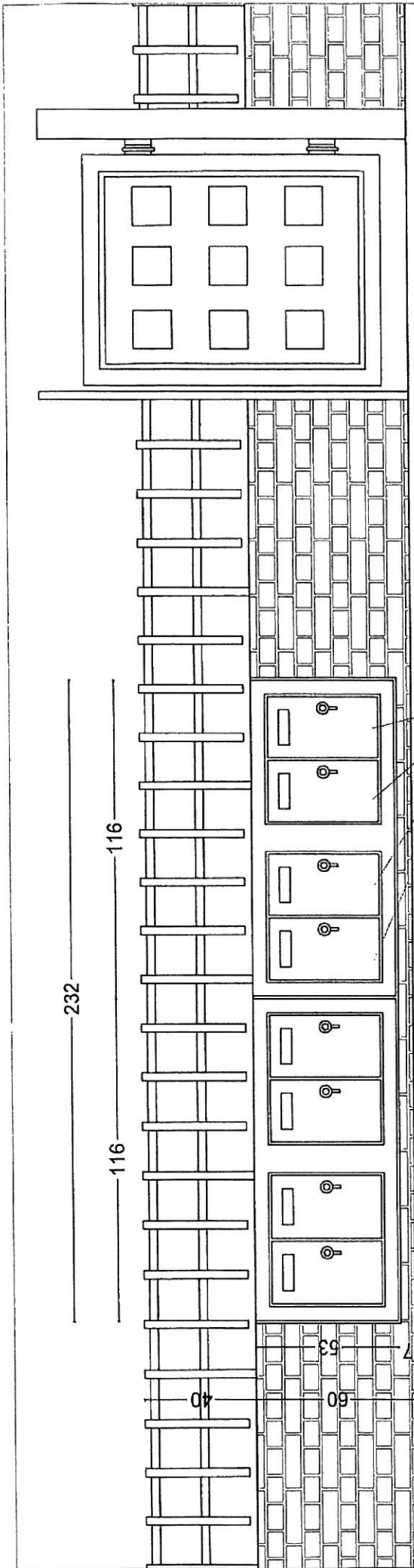
Tel. 030/984139  
Fax 030/9828097  
inlemer: www.spsrl.it  
e-mail: info@spsrl.it

S.P. STRUTTURE PREFABBRICARE s.r.l.  
Via Fornaci 10 Colombaro di Corte Franca (Bs)

# BOX 98 E4

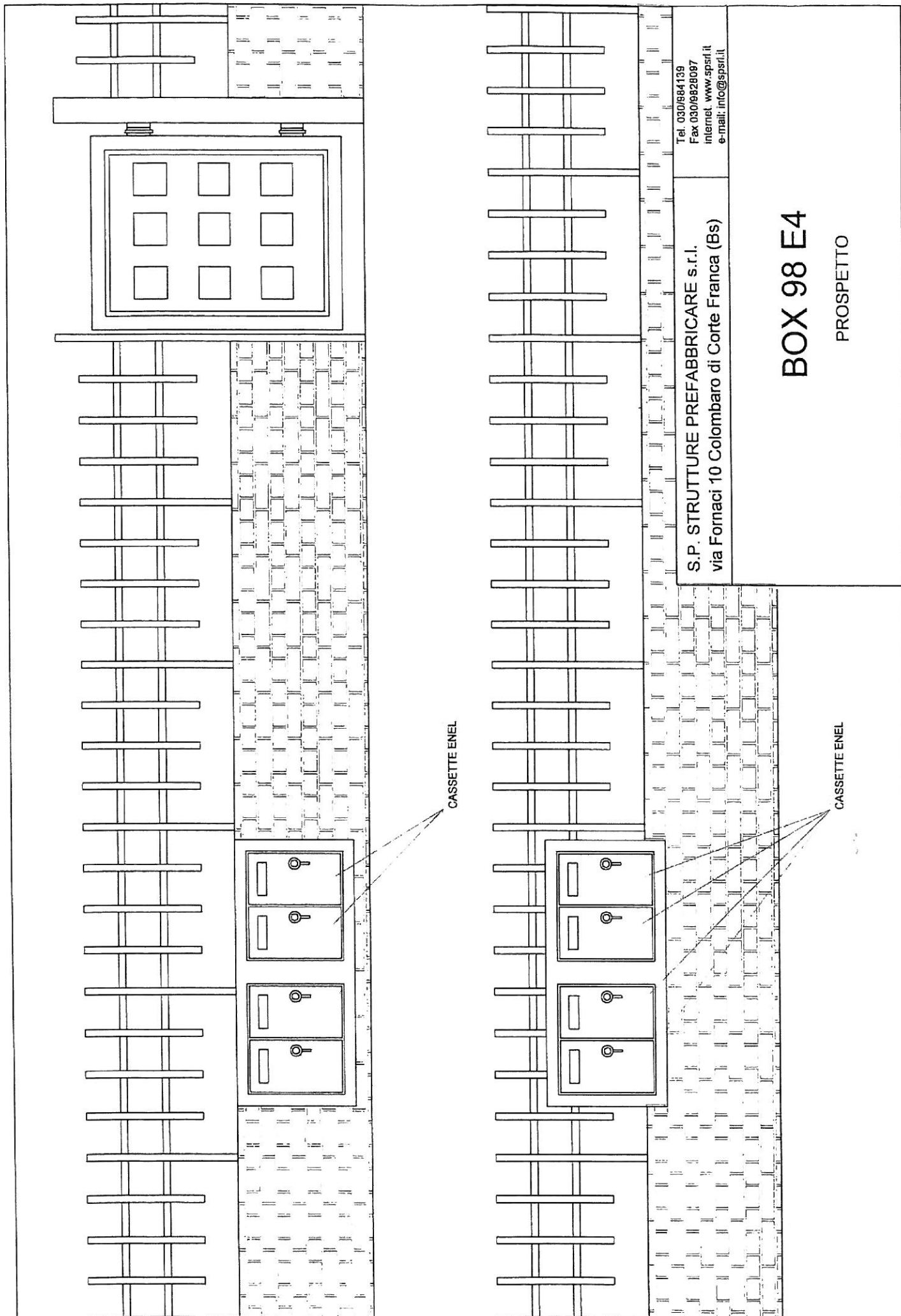
MANUFATTO IN CEMENTO ARMATO VIBRATO

PREDISPOSIZIONI:  
ALLACCIAMENTO ENERGIA ELETTRICA



S.P. STRUTTURE PREFABBRICATE s.r.l.  
 Via Formad 10 Colombaro di Corte Franca (Bs)  
 TEL. 030/984139  
 FAX 030/9828097

**BOX 98 E4+E4**  
 PROSPETTO (2 BOX AFFIANCATI)



Tel. 030/984139  
Fax 030/9828097  
internet: www.spsrl.it  
e-mail: info@spsrl.it

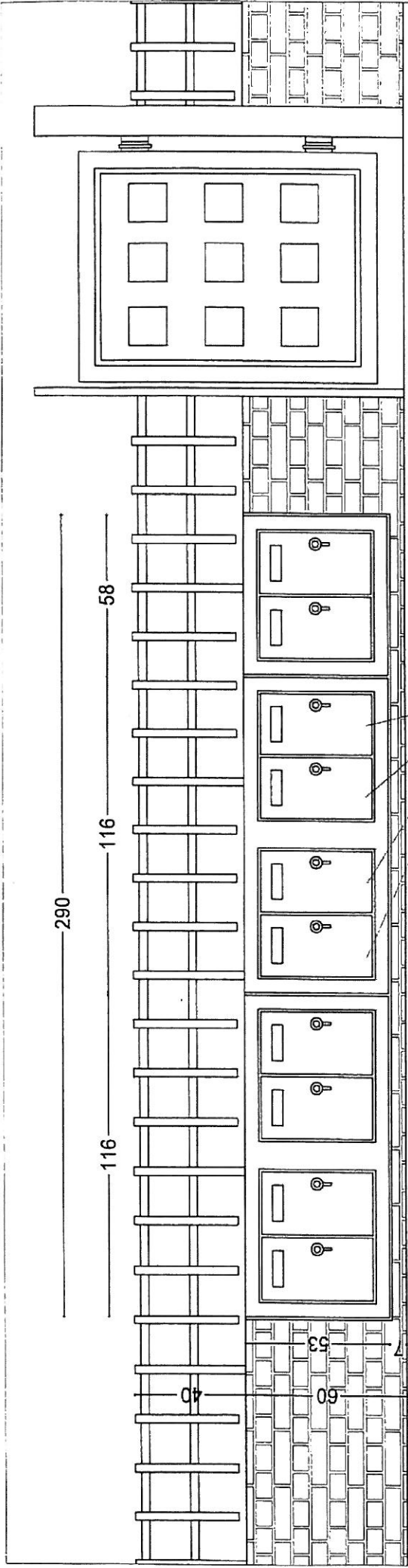
S.P. STRUTTURE PREFABBRICARE s.r.l.  
via Fornaci 10 Colombaro di Corte Franca (Bs)

# BOX 98 E4

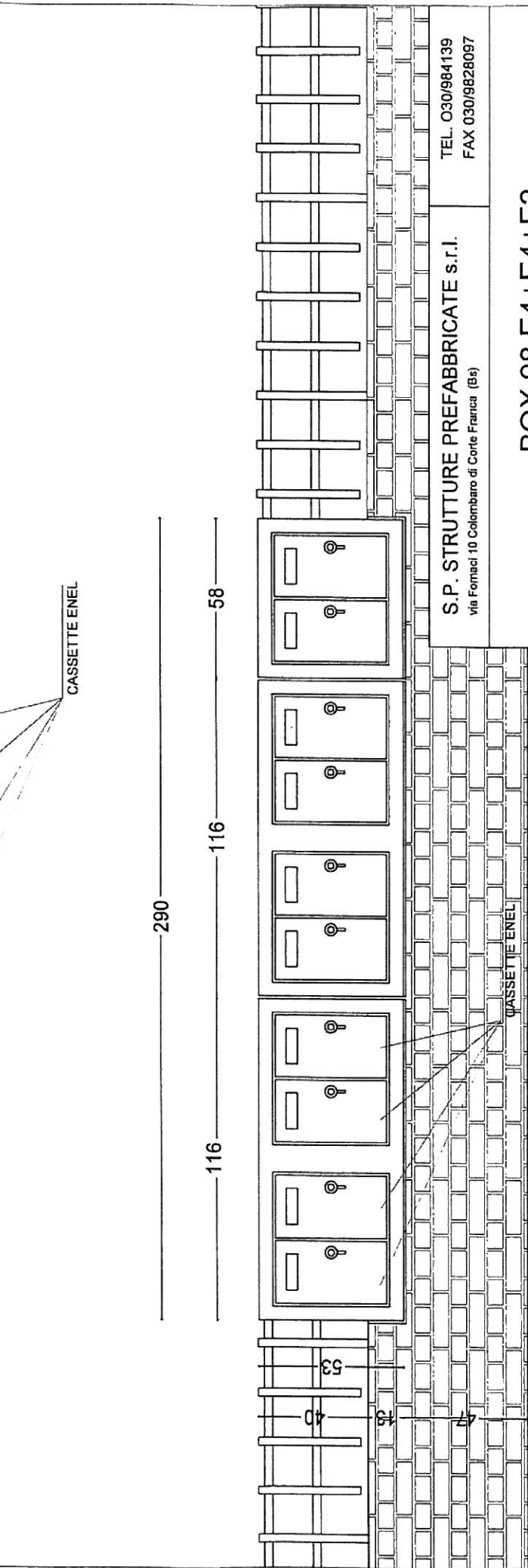
PROSPETTO

CASSETTE ENEL

CASSETTE ENEL



CASSETTE ENEL



CASSETTE ENEL

TEL. 030/984139  
FAX 030/9828097

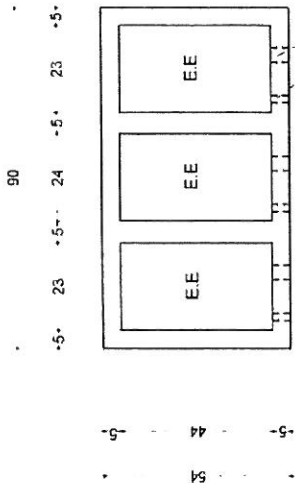
S.P. STRUTTURE PREFABBRICATE s.r.l.  
via Fornaci 10 Colembaro di Corte Franca (Bs)

**BOX 98 E4+E4+E2**

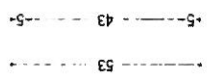
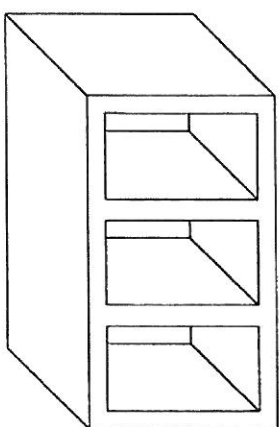
PROSPETTO (3 BOX AFFIANCATI)

**BOX 98 E3**





TUBI CORRUGGATI  
INGRESSO-USCITA  
ENERGIA ELETTRICA



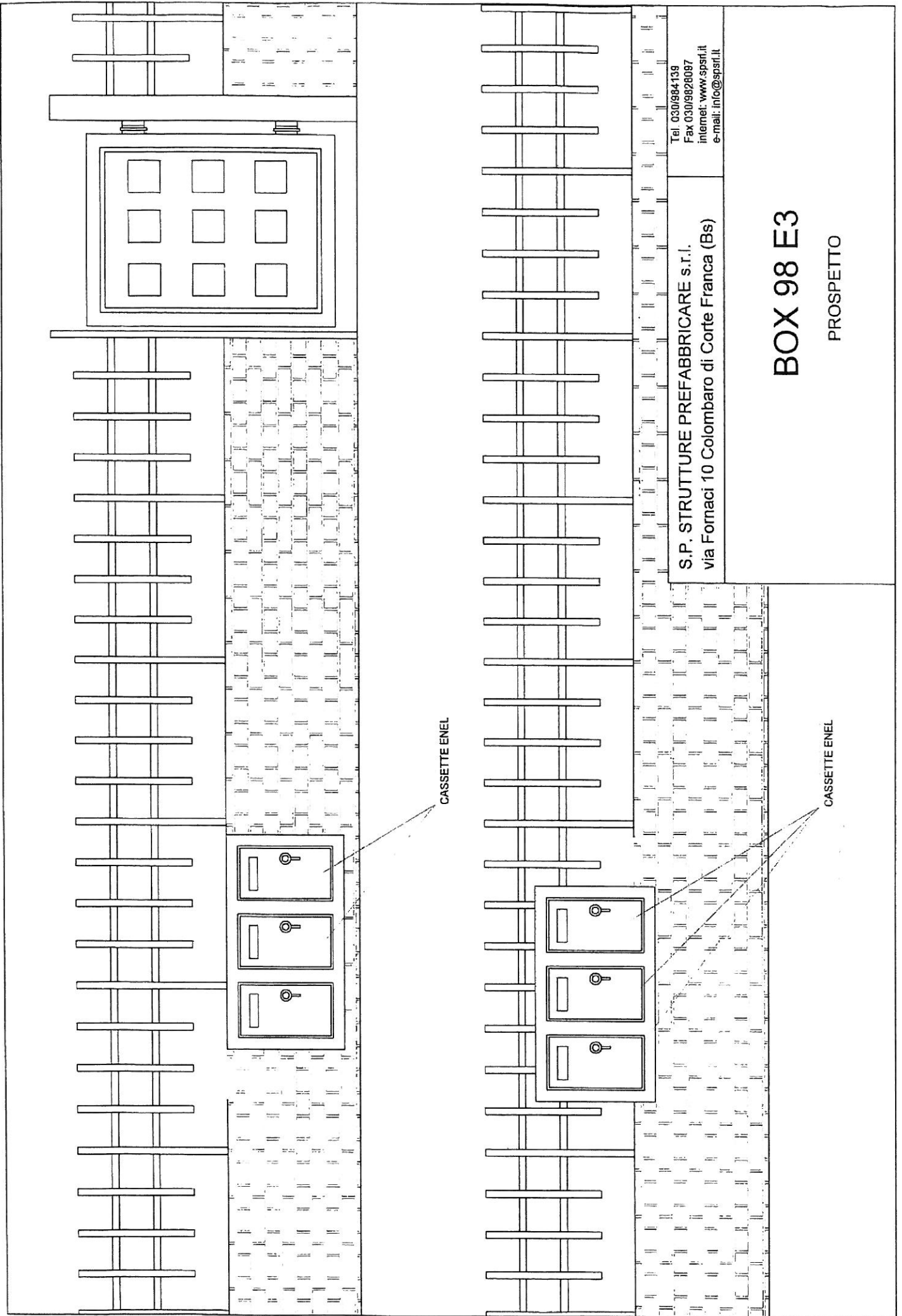
32

27

Tel. 030/984139  
Fax 030/9828097  
internet: www.spsrl.it  
e-mail: info@spsrl.it

S.P. STRUTTURE PREFABBRICARE s.r.l.  
via Fornaci 10 Colombaro di Corte Franca (Bs)

**BOX 98 E3**  
MANUFATTO IN CEMENTO ARMATO VIBRATO  
PREDISPOSIZIONI:  
ALLACCIAMENTO ENERGIA ELETTRICA



Tel. 030/984.139  
Fax 030/928097  
internet: www.spsrl.it  
e-mail: info@spsrl.it

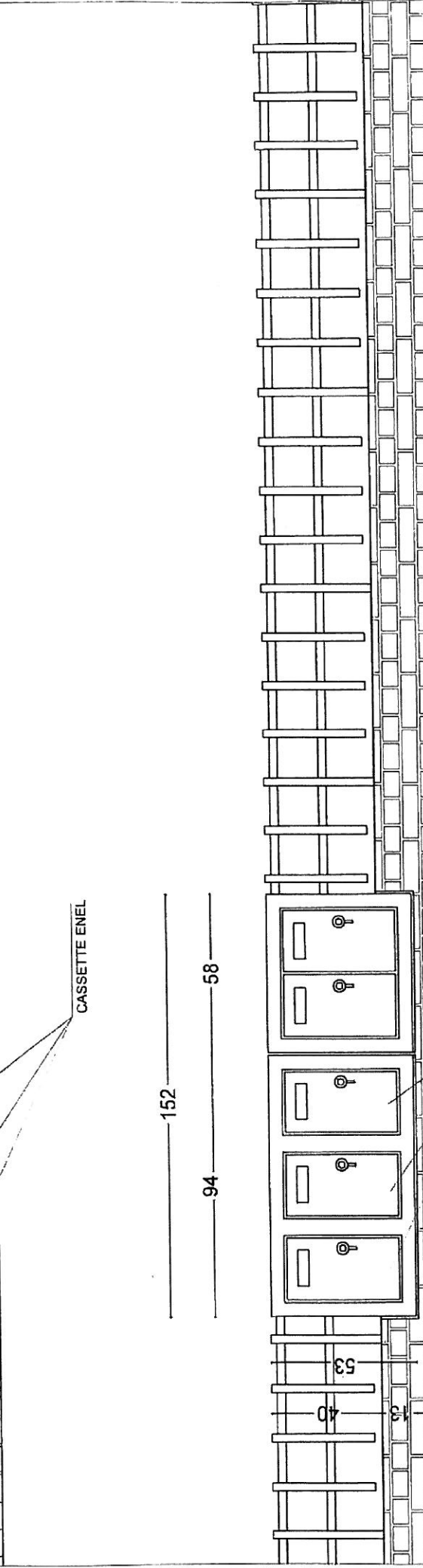
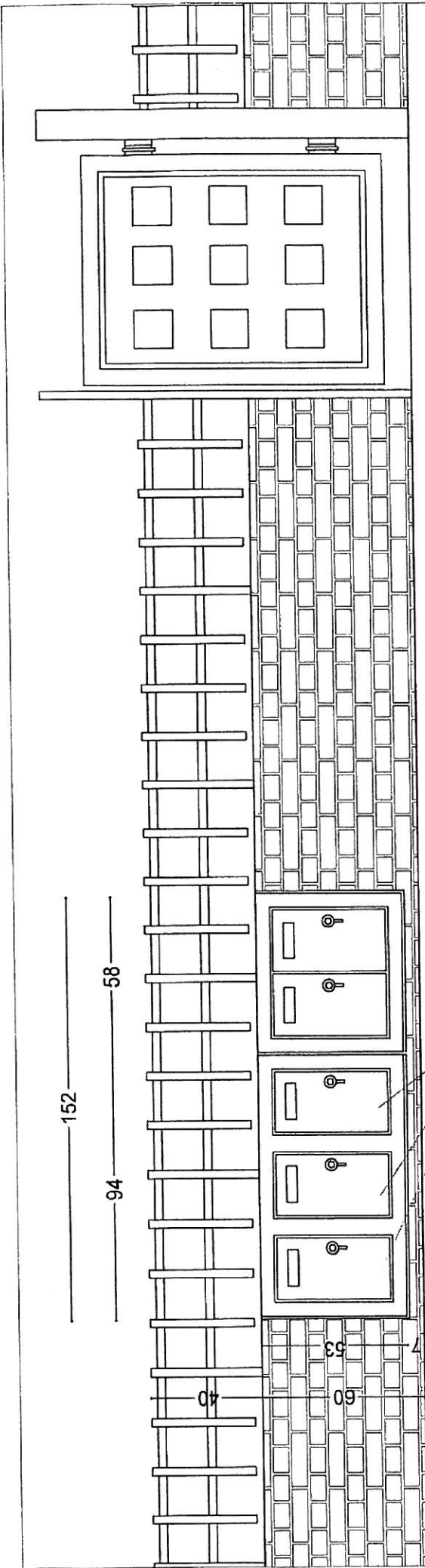
S.P. STRUTTURE PREFABBRICARE s.t.l.  
via Fornaci 10 Colombaro di Corte Franca (Bs)

# BOX 98 E3

PROSPETTO

CASSETTE ENEL

CASSETTE ENEL

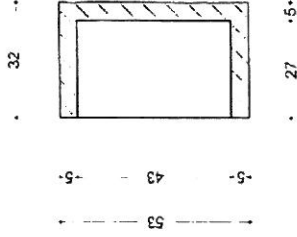
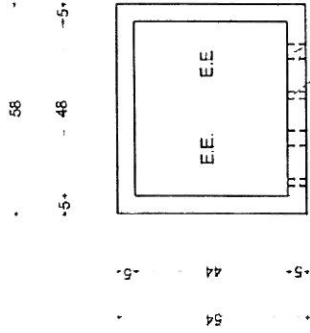
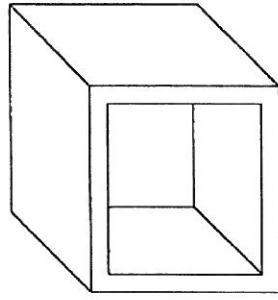


S.P. STRUTTURE PREFABBRICATE s.r.l.  
 via Formad 10 Colembaro di Corte Franca (Bs)

TEL. 030/984139  
 FAX 030/9828097

**BOX 98 E3+E2**  
 PROSPETTO (2 BOX AFFIANCATI)

**BOX 98 E2**



S.P. STRUTTURE PREFABBRICARE s.r.l.  
 via Fornaci 10 Colombaro di Corte Franca (Bs)

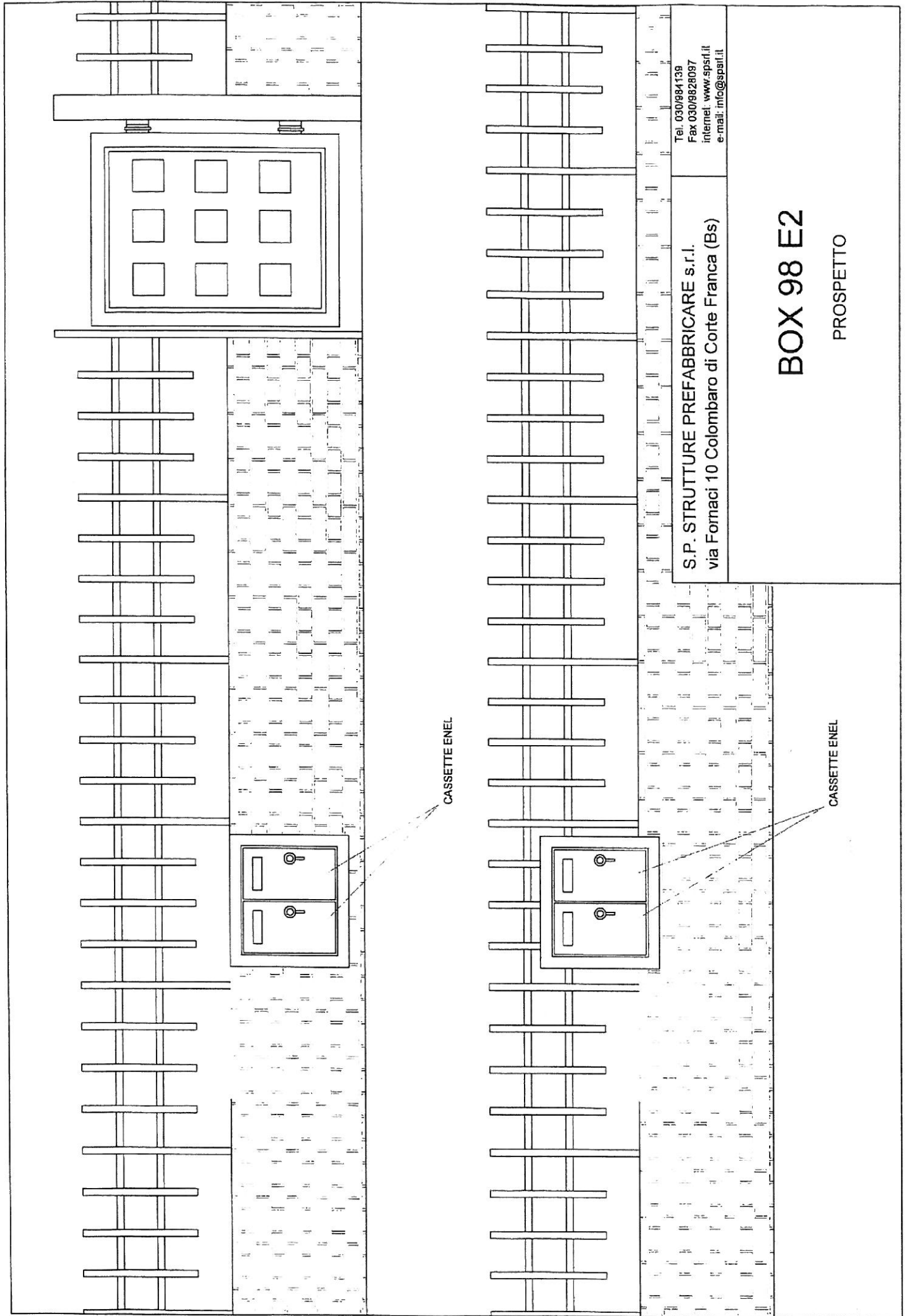
Tel. 030/984138  
 Fax 030/9828097  
 internet: www.spsrl.it  
 e-mail: info@spsrl.it

## BOX 98 E2

MANUFATTO IN CEMENTO ARMATO VIBRATO

PREDISPOSIZIONI:  
 ALLACCIAMENTO ENERGIA ELETTRICA





Tel. 030/984139  
Fax 030/9828097  
internet: www.spsrl.it  
e-mail: info@spsrl.it

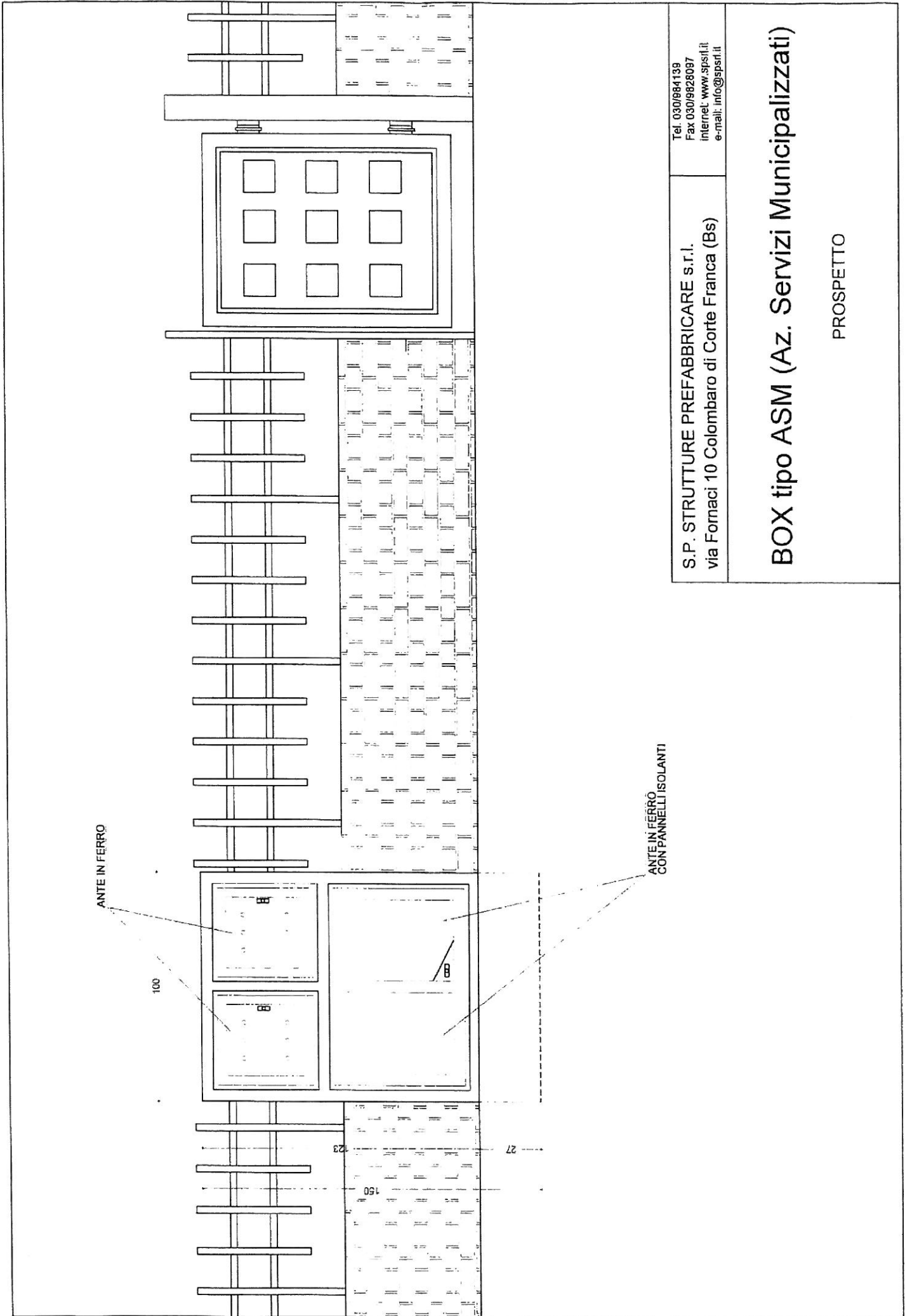
S.P. STRUTTURE PREFABBRICARE s.r.l.  
via Fornaci 10 Colombaro di Corte Franca (Bs)

# BOX 98 E2

PROSPETTO

**BOX**  
**tipo ASM**





Tel. 030/984139  
 Fax 030/9828097  
 internet: www.spsst.it  
 e-mail: info@spsst.it

S.P. STRUTTURE PREFABBRICARE s.r.l.  
 via Fornaci 10 Colombaro di Corte Franca (Bs)

**BOX tipo ASM (Az. Servizi Municipalizzati)**

PROSPETTO

**BOX  
INGRESSO**

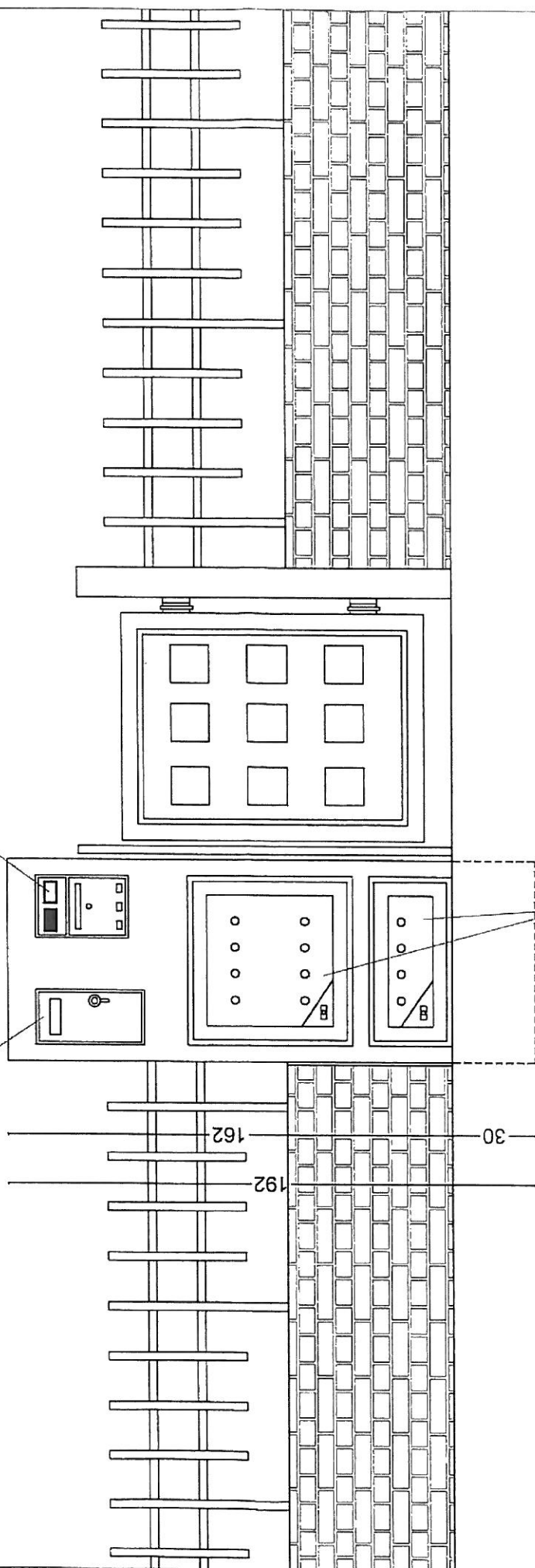




CASSETTA POSTA - CITOFONO

CASSETTA ENEL

74



ANTE IN FERRO

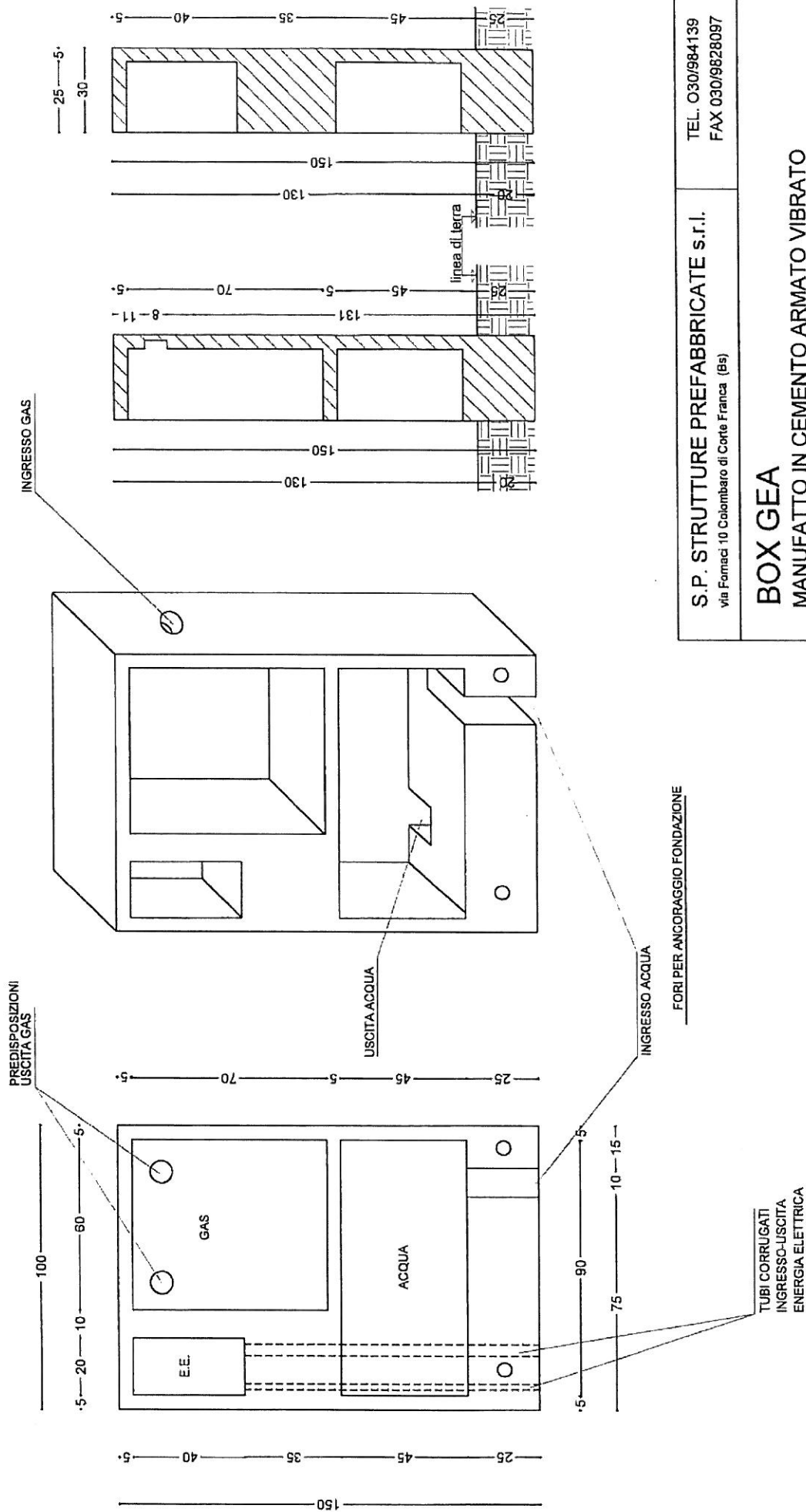
S.P. STRUTTURE PREFABBRICATE s.r.l.  
via Fornaci 10 Colombaro di Corte Franca (Bs)

TEL. 030/984139  
FAX 030/9828097

**BOX INGRESSO**

PROSPETTO

BOX  
GEA



S.P. STRUTTURE PREFABBRICATE s.r.l.  
 via Fornaci 10 Colombaro di Corte Franca (Bs)

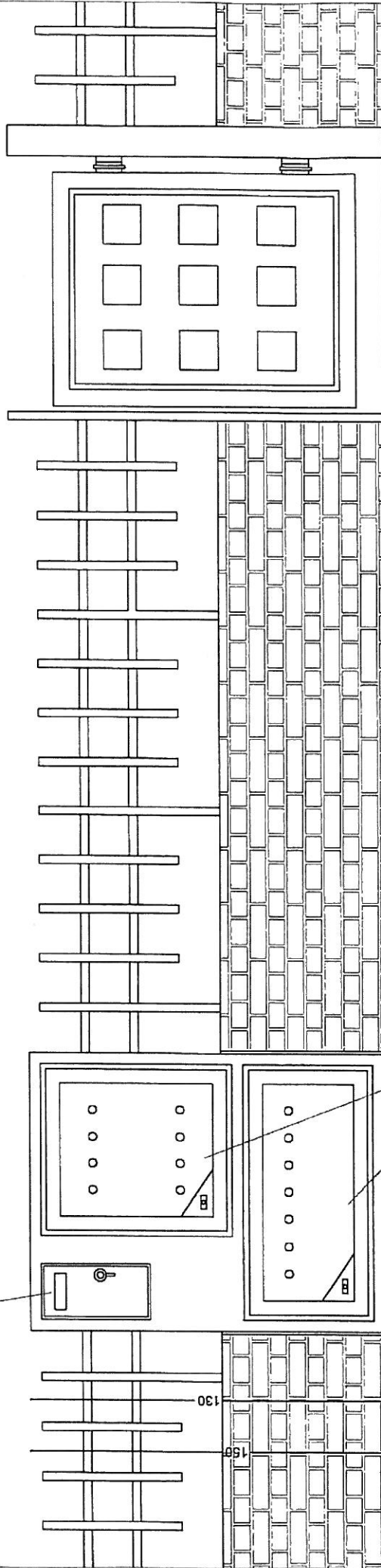
TEL. 030/984139  
 FAX 030/9828097

**BOX GEA**  
**MANUFATTO IN CEMENTO ARMATO VIBRATO**

**PREDISPOSIZIONI:**  
**ALLACCIAMENTO GAS - ENERGIA ELETTRICA - ACQUA**  
 (disponibile sinistro e destro)

CASSETTA ENEL

100



130

150

20

ANTE IN FERRO

S.P. STRUTTURE PREFABBRICATE s.r.l.  
Via Fornaci 10 Colombaro di Corle Franca (Bs)

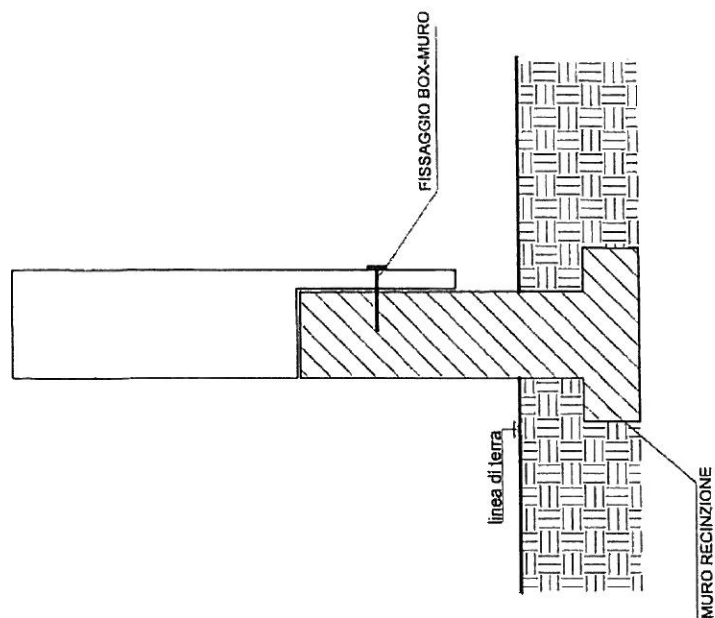
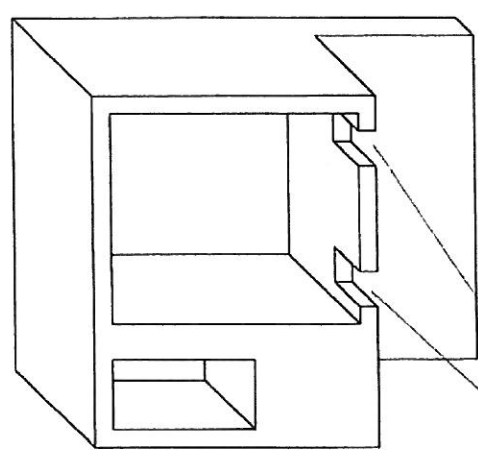
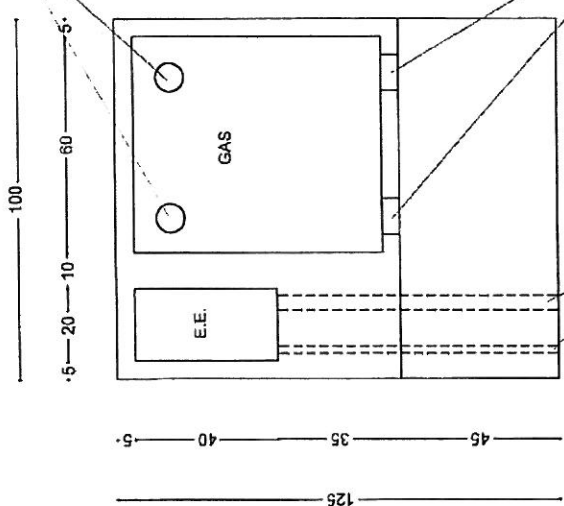
TEL. 030/984139  
FAX 030/9828097

BOX GEA

PROSPETTO

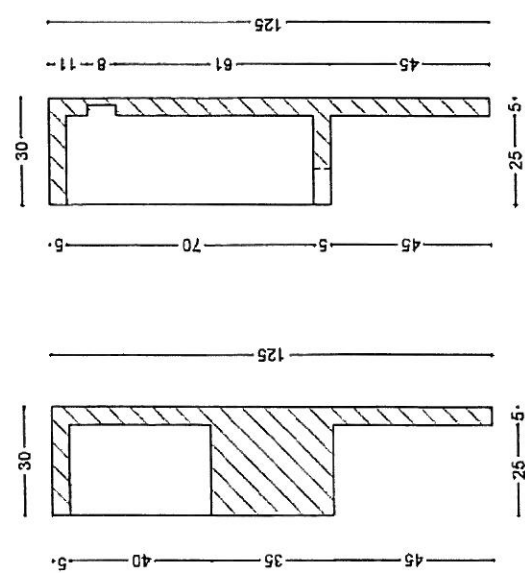
BOX  
GE

PREDISPOSIZIONI USCITA GAS



INGRESSO GAS

TUBI CORRUGATI INGRESSO-USCITA ENERGIA ELETTRICA



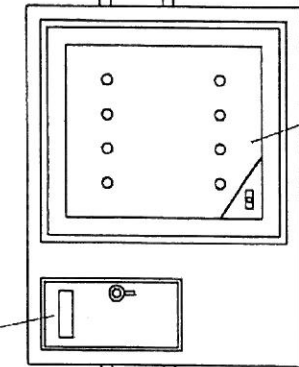
S.P. STRUTTURE PREFABBRICATE s.r.l.  
via Formed 10 Colombaro di Corte Franca (Bg)  
TEL. 030/984139  
FAX 030/9828097

**BOX GE**  
MANUFATTO IN CEMENTO ARMATO VIBRATO  
PREDISPOSIZIONI:  
ALLACCIAMENTO GAS - ENERGIA ELETTRICA  
(disponibile sinistro e destro)

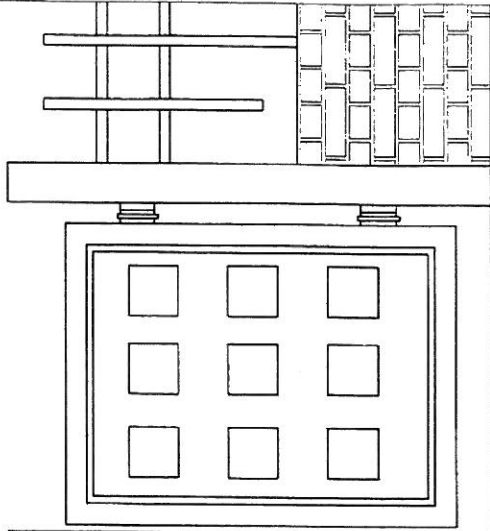
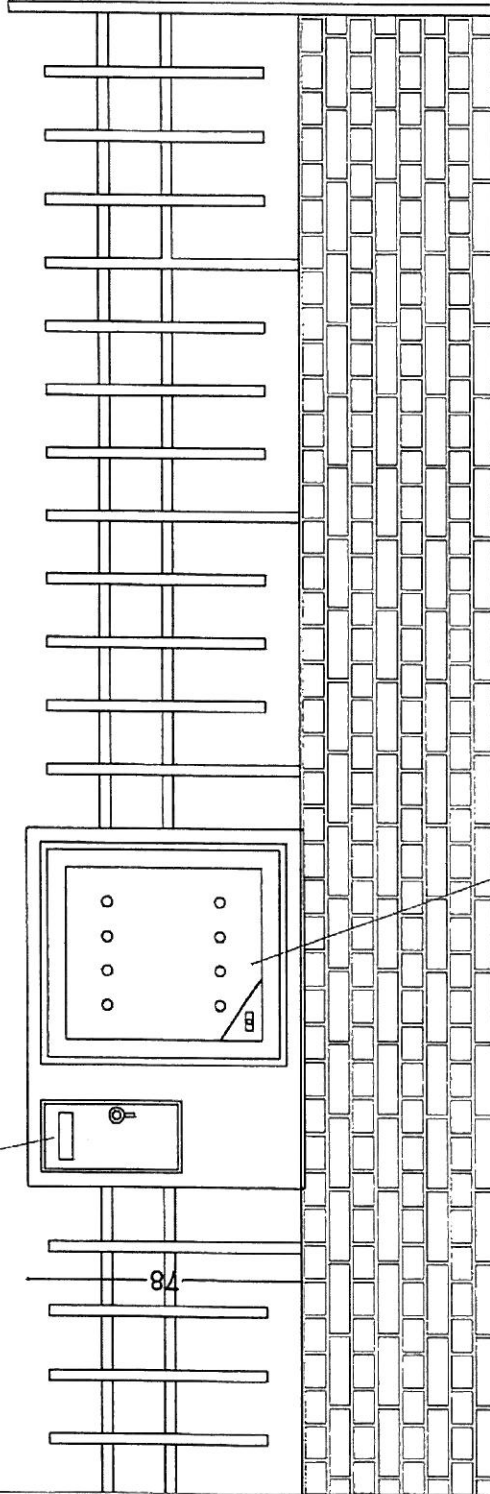


CASSETTA ENEL

100



84



ANTA IN FERRO

S.P. STRUTTURE PREFABBRICATE s.r.l.  
via Fornaci 10 Colombaro di Corte Franca (Bs)

TEL. 030/984139  
FAX 030/9828097

BOX GE  
PROSPETTO